



Sutton Local Safeguarding Children Board (LSCB)

- **Who We Are**
- **What We Do – Statutory Functions**
- **Our Priorities**
- **Standards and Quality Assurance**
- **How the LSCB impacts on Practice**

Who We Are – the LSCB team



CHRISTINE DAVIES CBE
INDEPENDENT LSCB CHAIR

Quality Assurance Service – People Directorate

CAMILLA WEBSTER
LSCB BUSINESS and L&D MANAGER

NICOLE LYES
L&D OFFICER

LISA GOUCHER
LSCB ADMINISTRATOR

EMMA HARAN
LSCB PROJECT OFFICER (temporary)

What We Do – LSCB Statutory Functions

Section 14 of the *Children Act 2004*

- a) To coordinate safeguarding and promote the welfare of children
- b) To ensure the effectiveness of what is done by those on the Board

Functions set out in *Local Safeguarding Children Boards Regulations 2006*

- Develop multi-agency policy and procedures
- Communication, awareness raising, promotional work
- Monitoring and evaluating the effectiveness of what is done individually and collectively
- Participating in the planning of services for children in the areas
 - Undertaking reviews of serious cases and advising the authority and their Board partners on lessons to be learned

***Working Together to Safeguard Children* – detailed statutory guidance**

SUTTON LSCB PRIORITIES FOR THE NEXT 3 YEARS

LSCB WORKSTREAMS 2015-2018

WORKSTREAM 1	Ensuring Board effectiveness - leadership, management and co-ordination and children and young people's voices
WORKSTREAM 2	Strengthening governance and relationships with other strategic boards (children's trust board, joint health and well-being board, community safety panel, corporate parenting forum safeguarding adults board, corporate parenting forum)
WORKSTREAM 3	Ensuring <i>Working Together</i> (2015) compliance
WORKSTREAM 4	Developing and embedding a robust LSCB Quality Assurance Framework
WORKSTREAM 5	Identifying and addressing local safeguarding priorities to improve child outcomes

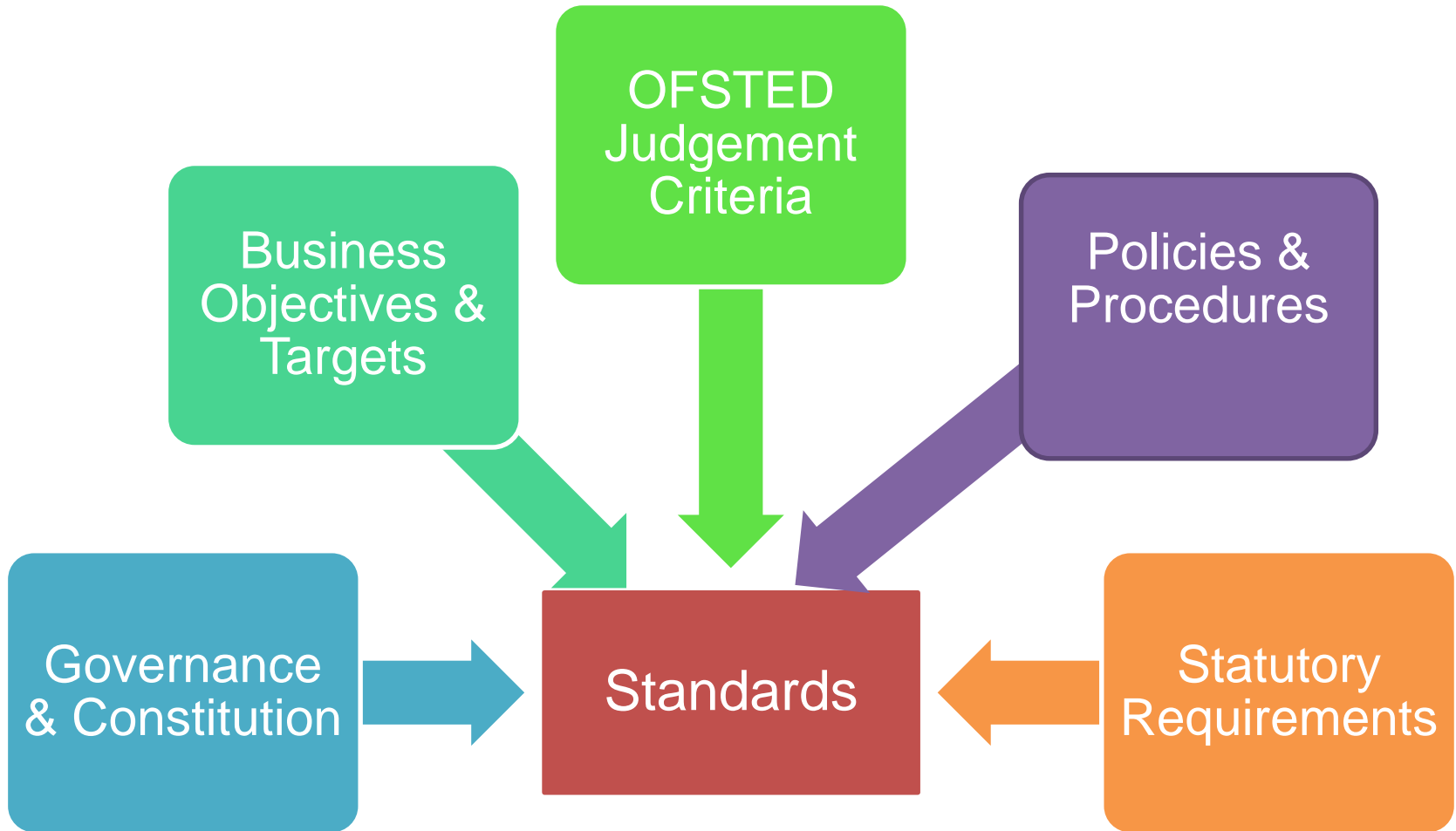
SUTTON LSCB POLICY AND PRACTICE PRIORITIES

- **Child Sexual Exploitation (CSE)**
- **Missing Children**
- **FGM**
- **Private Fostering**
- **Self-harm**

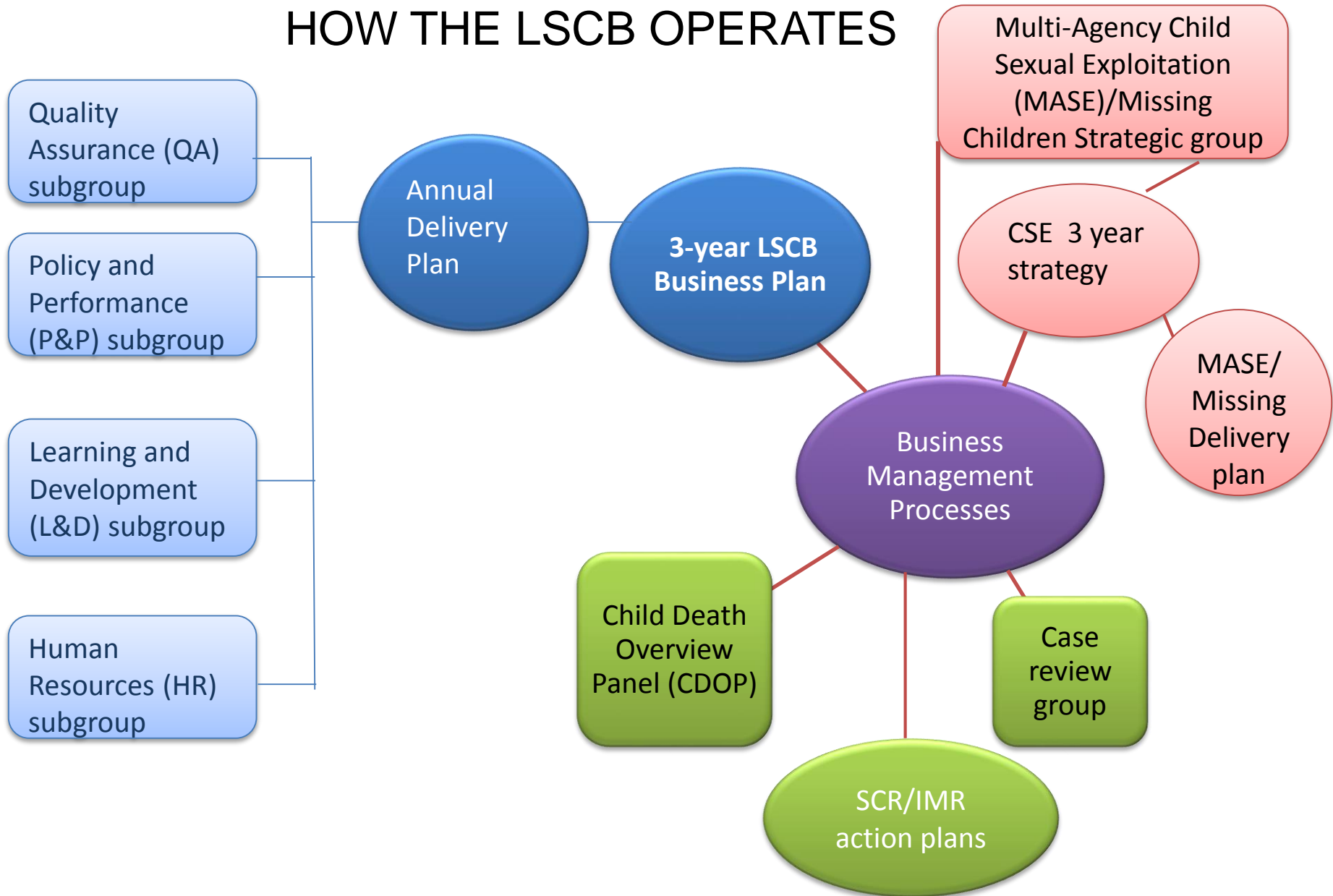
SUTTON LSCB LEARNING AND DEVELOPMENT PRIORITIES (alongside the Child Protection Core Training programme)

- **LSCB partner leadership development**
- **Learning from SCRs**
- **CSE**
- **Missing Children**
- **FGM**
- **Self harm**
- **Domestic Abuse**

Quality Assurance: Standards



HOW THE LSCB OPERATES



HOW LSCB IMPACTS ON SINGLE AND MULTI-AGENCY PRACTICE

EXAMPLES OF THE WAY LSCB ACTIVITIES CONTRIBUTE TO PRACTICE IMPROVEMENTS

Multi-agency policy, protocol and procedure developments that gets translated into single agency practice guidance and procedures.

Evaluation of the effectiveness of safeguarding HR policies, procedures and practices across multi agency partners .

S.11 audit programme: single self-evaluation of safeguarding arrangements.

Thematic case audits.

Multi-agency training and professional development. Scrutiny and challenge of single agency arrangements.

Professional development to raise awareness and improve HR Practice across the agencies.

Children and Young People's voices .

Young people's input into commissioning.

Implementation of findings about systems and practice from Serious Case Reviews (SCR), Individual Management Reviews (IMR) and Learning Reviews. Dissemination of findings from national SCR repository.